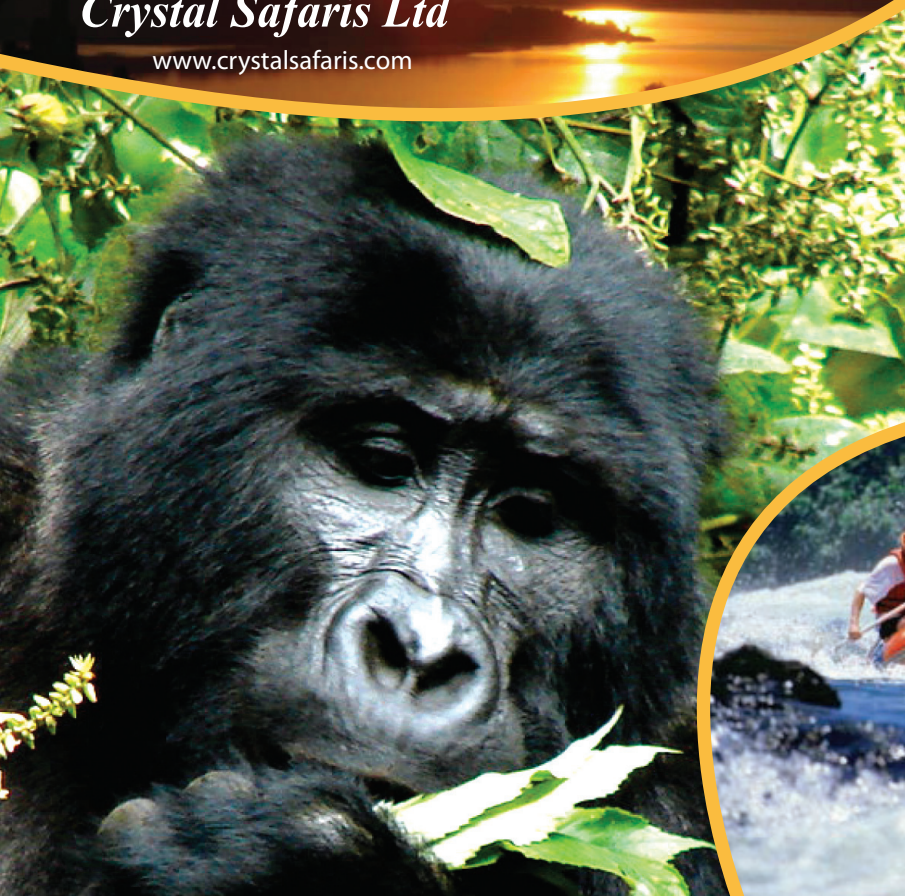




Crystal Safaris Ltd

www.crystalsafaris.com



**UGANDA
KENYA
TANZANIA
RWANDA**

About Crystal Safaris

Crystal Safaris is a Tours and Travel Company based in Uganda offering tailor made safaris to Uganda, Rwanda, Kenya, Tanzania and Zanzibar with 12 years of invaluable experience. Our tailor-made safaris are built around each client's individual needs, time and budget offering them the complete choice, freedom and a rare opportunity to appreciate the beauty and diversity of the wild pearl of Africa surrounded by extraordinary comfort and style. We also ensure that our safaris respect the environment and culture of local communities.

Activities: We specialize in Mountain Gorilla trekking in Uganda and Rwanda, chimpanzee and tracking and habituation, Birding, Wildlife and scenery, mountain climbing, white water rafting on the River Nile, Fishing, photographic tours, cultural tours, volunteer tours, educational trips, and ecotourism, beach and honeymoon holidays. We provide the above services to private individuals, groups, families and business executives



Please email us for the best quote based on your desired accommodation (high end, mid range or budget)
Email: info@crystalsafaris.com



Accommodation: We carefully choose not only competitively priced but also top class comfortable lodges, tented safari camps, beach resorts and exclusive hotels which provide excellent and personalized services for a discerning traveler. Accommodation is categorized in 3 classes: high end/Luxury (5 star), Mid-range (3 star) and low budget including guest Houses and Camping.

We also have our own lodge known as Gorilla Safari Lodge (www.gorillasafarilodge.com) located in Bwindi Impenetrable forest which is home of 330 gorillas, half of the world's population. The park is also a UNESCO Heritage site and it boasts of many bird species including 23 Albertine Rift endemic bird species recorded making it a number one birding spot.

Gorilla Safari Lodge has 13 luxurious units of bandas of which 2 of them have two rooms which are suitable for families and other people travelling together. Each Banda is equipped with its own ensuite bathroom with hot and cold running water and has a unique breath taking scenery overlooking the Bwindi Forest. This is the ideal location to trek the gorillas as it is a few meters from the starting point of the gorilla trekking.



Please email us for the best quote based on your desired accommodation (high end, mid range or budget)
Email: info@crystalsafaris.com

Staff: Well aware that the success of any safari greatly depends upon the character of the Guide/Driver. We therefore take great care in selecting our Guides/Drivers who are able to provide a cheerful, caring and attentive service to our clients. All our guides are locally trained and have a deep knowledge of all routes, conditions, local attraction and their ability to spot birds and animals is outstanding. Bilingual guides are available on request.

Tailor Made Safaris and Rates: The team of Crystal Safaris is dedicated and committed to giving the best tailor made rates based around each clientele special interests, time scale, budget and requirements. Our experienced and dedicated staff will be there from the start to the end to ensure that you have the holiday of their life time.

Crystal Safaris has an extensive and first hand knowledge of the product, offering reliable accurate and unbiased travel advice in tailor-making tours to meet individual requirements and budgets. Hard work goes in to ensure that all expectations are fulfilled and that each safari leaves a special memory and lasting impression.

Departures: We have set departures throughout the year for small groups consisting of 2-6 people giving each client a chance to enjoy Africa at the cheapest prices ever without compromising the quality of our services. Please inquire for further information



Uganda

Uganda lies astride the Equator in Eastern Africa between longitudes 29 ½° East and 35° East and between latitudes 4 ½° North and ½° South, at an average altitude of 1,100 meters above sea-level. The total area is 236,580sq.Km. Uganda is bordered by the Arab Republic of Southern Sudan to the North, the Republic of Kenya to the east, the Democratic Republic of Congo to the west and the united republic of Tanzania and the Republic of Rwanda to the south.

Overview: Ecologically, Uganda is where the East African savannah meets the West African jungle. Where else but in this impossibly lush country can one observe lions prowling the open plains in the morning and track chimpanzees through the rainforest undergrowth the same afternoon, then the next day navigate tropical channels teeming with hippos and crocodiles before setting off into the misty mountains to stare deep into the eyes of a mountain gorilla? Certainly, Uganda is the only safari destination whose range of forest primates is as impressive as its selection of plains antelopes. And this verdant biodiversity is further attested to by Uganda's status as by far the smallest of the four African countries whose bird checklist tops the 1,000 mark.

Please email us for the best quote based on your desired accommodation (high end, mid range or budget)
Email: info@crystalsafaris.com

13 DAYS BEST OF UGANDA

DAY 1: Meet and greet at Entebbe International Airport by Crystal Guide who will warmly welcome you and facilitate seamless arrival formalities and transfer you to your hotel. BB

DAY 2: Transfer to Murchison Falls National Park via the Rhino Sanctuary. Overnight at your lodge. FB

DAY 3: Early morning game drive on the northern bank of the River Nile and in the afternoon go for a boat cruise upstream the calm Victoria Nile to the base of the falls Overnight at your lodge. FB

DAY 4: Transfer to Kibale National Park which is reputed for the highest concentration of Chimpanzees in East Africa. You will pass via the top of the falls where you will marvel at the photogenic Murchison Falls. Overnight at your lodge. FB

DAY 5: Go Chimpanzee tracking in Kibale Forest National Park, Later in the afternoon enjoy a guided



nature walk in the Bigodi Swamp. Overnight at your lodge. FB

DAY 6: Proceed to Queen Elizabeth National Park following the mystical Rwenzori Mountain Range. As you go through the game park you might spot some animals. After lunch enjoy the unique 2-hour boat cruise on the Kazinga Channel. into Lake Edward. Overnight at your lodge FB

DAY 7: Early morning Game drive where you may spot lion, leopard, giant forest hog, Cape buffalo, elephant, defassa waterbuck, Uganda Kob, topi and bushbuck. Later transfer to Ishasha sector where you will go for yet another game drive in the evening in search of tree climbing lions. Overnight at your lodge. FB

DAY 8: Drive through the Switzerland of Africa area known as the Kigezi Highlands with its terraced hillside and winding roads to Bwindi. Overnight at your lodge. FB

DAY 9: After an early morning breakfast proceed to the starting point to embark on your Gorilla Trekking in Bwindi Impenetrable Forest in such of the awesome Gorillas – an unforgettable experience of your lifetime. Don't forget to carry your rain gear, packed lunch and plenty of water. Once you find the gorillas, you will spend with them an hour before returning to your lodge. Overnight at your lodge. FB

DAY 10: You may go for another gorilla trekking on payment of supplement or visit our community projects around the lodge or go for the Batwa Community Trail. Overnight at your Lodge. FB

DAY 11: After breakfast transfer to Lake Mburo National Park. Go for an evening boat cruise on L. Mburo and get quite close to the croc and hippos. Overnight at your lodge. FB

DAY 12: Leisurely drive back to Kampala with a stop over at equator where you will be able to stand in 2 hemispheres at the same time. Overnight at your hotel. BB

DAY 13: Depending on the departure time you may go for the following excursions on payment of a supplement: Half day white water Rafting on River Nile, half day trip to Ngamba Island in L. Victoria to see the orphaned chimpanzees or city tour. Transfer to the airport according to your flight time.



4 DAYS UGANDA GORILLA SAFARI

DAY 1: Meet and greet at Kigali International Airport by Crystal representative who will warmly welcome you and facilitate seamless arrival formalities. Overnight at your lodge BB

DAY 2: Visit the Genocide Memorial Centre and then transfer to Bwindi via Kyanica boarder through the winding roads as you marvel at the breath taking sceneries. Overnight at Gorilla Safari Lodge (www.gorillasafarilodge.com). FB

DAY 3: After an early morning breakfast proceed to the starting point to embark on your Gorilla Trekking in such of the awesome Gorillas – an unforgettable experience of your lifetime. Don't forget to carry your rain gear, packed lunch and plenty of water. Once you find the gorillas, you will spend with them an hour before returning to your lodge. Overnight at Gorilla Safari Lodge (www.gorillasafarilodge.com). FB

DAY 4: Depending on your flight time, you can either visit our community projects around the lodge or go golden monkey tracking or trek the Batwa Trail before transferring back to Kigali to catch your flight. (payment of a supplement will be required).

9 DAYS PRIMATE SAFARI

DAY1: Meet and greet at Entebbe International Airport by Crystal representative who will warmly welcome you and facilitate seamless arrival formalities. Overnight at your lodge. BB

DAY 2: Transfer to Kibale National park which is reputed for the highest concentration of chimpanzees in East Africa. Overnight at your lodge. FB

DAY 3: Go Chimpanzee tracking in Kibale Forest National Park, Later in the afternoon enjoy a guided nature walk in the Bigodi Swamp. Overnight at your lodge. FB

DAY 4: After breakfast you will proceed to Queen Elizabeth National Park following the mystical Rwenzori Mountain range for most of the journey. Afternoon, enjoy the unique 2-hour boat cruise on the Kazinga Channel which joins Lake Edward and Lake George. Overnight at your Lodge. FB

DAY 5: Early morning Game drive where you may spot lion, leopard, giant forest hog, Cape buffalo, elephant, defassa waterbuck, Uganda Kob, topi and bushbuck. Later transfer to

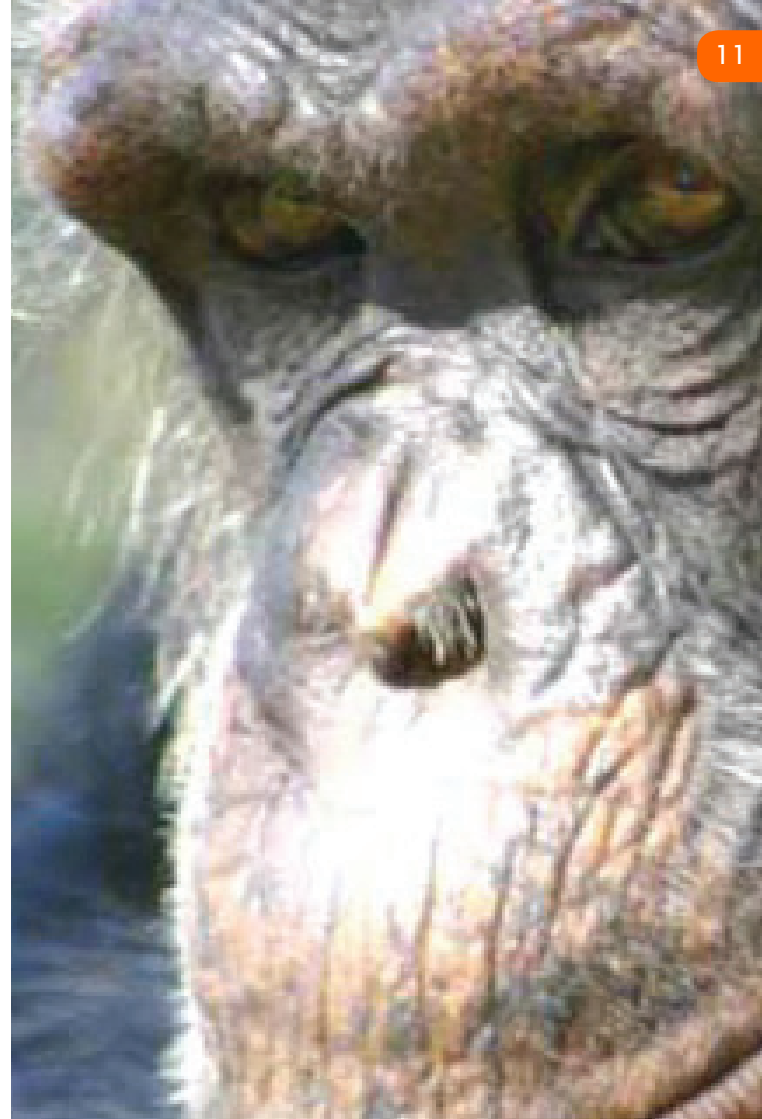
Ishasha sector where you will go for yet another game drive in the evening in search of tree climbing lions. Overnight at your lodge. FB

DAY 6: Drive through the Switzerland of Africa area known as the Kigezi Highlands with its terraced hillside and winding roads to Bwindi. Overnight at your lodge. FB

DAY 7: After an early morning breakfast proceed to the starting point to embark on your Gorilla Trekking in Bwindi Impenetrable Forest in such of the awesome Gorillas – an unforgettable experience of your lifetime. Don't forget to carry your rain gear, packed lunch and plenty of water. Once you find the gorillas, you will spend with them an hour before returning to your lodge. Overnight at your lodge. FB

DAY 8: After breakfast transfer to Lake Mburo National Park. Go for an evening boat cruise on L. Mburo and get quite close to the croc and hippos. Overnight at your lodge. FB.

DAY 9: Early morning game drive and then transfer to Entebbe to catch your evening flight. You will have a stopover at equator where you will be able to stand in 2 hemispheres at the same time. Overnight at your hotel. BB



11 DAYS HIKE OF "THE MOUNTAINS OF THE MOON"

DAY 1: Arrival at Entebbe International Airport. Overnight at your hotel. BB

DAY 2: Depart Rwenzori Mountains with an overnight at your lodge. (BB)

DAY 3: NYAKALENGIJA (1615m) - NYABITABA HUT (2651m). Proceed Nyakalengija to start your hiking to Nyabitaba Hut. Over night at Nyabitaba hut.

DAY 4: NYABITABA (2651m) – MUBUKU RIVER (2600m) JOHN MATT (3505m). This involves a demanding 7 hours hike to John Matt Hut... Over night at John Matt hut.

DAY 5: JOHN MATT HUT (3505m) - BUJUKU HUT (3962m). The route fords the Bujuku River as you cross the lower Bigo bog; a steep climb follows to reach the upper Bigo bog where a board walk has been constructed to assist walkers. Overnight at Bujuku hut

DAY 6: BUJUKU (3962m) – ELENNA. From Bujuku hut, the trail crosses more mud before climbing steeply through a forest of giant groundsel, climbing a short ladder to ascend the Groundsel gully. Overnight at Elenna Hut.

DAY 7: ELENNA – KITANDARA (4023m). Arise in the morning and head to the margarita peak. Overnight at L. Kitandara hut.

DAY 8: KITANDARA (4023m) – FRESHFIELD PASS (4882m) – GUY YEOMAN (3505m). The trek to guy Yeoman hut takes around 5 hours. The hut enjoys a lovely location close to Mubuku River with terrific views of the looming Mt. Baker to the north. Overnight at Guy yeoman.

DAY 9: GUY YOEMAN (2651m) - NYAKALENGIJA (1615m). With an early rise you will be able to descent all the way back to Nyakalengija where you will be met again by your driver guide. Overnight at your lodge. (BB)

DAY 10: KASESE – KAMPALA. Transfer back to Kampala. Overnight at your hotel. BB

DAY 11: KAMPALA- ENTEBBE (37KMS). Depending on the time of your flight, the guide will drop you at Entebbe ready to depart.





Rwanda

Rwanda is a land of great diversity and beauty. Popularly known as 'the land of a thousand hills'. Rwanda has six volcanoes, twenty-three lakes and numerous rivers, some forming the source of the great River Nile. The landscapes in this green country are truly breathtaking. Many a visitor to Rwanda has remarked that the physical beauty of the country is without equal on the African continent. Spectacular volcanoes and dense tropical forests dominate the north of the country, while gentle hills and valleys, calm lakes and turbulent rivers in both savannah and dense tropical vegetation dominate the rest of the country.

4 DAYS RWANDA GORILLA SAFARI

DAY 1: ARRIVAL. Meet and greet at Kigali International Airport by Crystal representative who will warmly welcome you and facilitate seamless arrival formalities. After a short transfer to your hotel you will be briefed about your safari. Overnight at your hotel. BB

DAY 2: TRANSFER TO PARK DE VOLCANS. After breakfast go for a city tour including the genocide Centre then drive north through the winding roads

and terraced hills of Rwanda on to Ruhengeri. Overnight at your lodge. FB

DAY 3: GORILLA TREKING. After an early morning breakfast proceed to the starting point to embark on your Gorilla Trekking in PNV in such of the awesome Gorillas – an unforgettable experience of your lifetime. Don't forget to carry your rain gear, packed lunch and plenty of water. Once you find the gorillas, you will spend with them an hour before returning to your lodge. Overnight at

DAY 4: DEPARTURE. Depending on your flight time you can either go golden monkey tracking or trek Dian Fossey's Grave or visit community projects before transferring to Kigali Airport to catch your flight.





Kenya

No other country on earth can offer the visitor as much to see and do. Within the borders of a single country, you will find savannahs rich with big game, timeless cultures unchanged by the modern world, pristine beaches and coral reef, equatorial forests and mighty snow-capped mountains, searing deserts and cool highland retreats and endless opportunities for adventure, discovery, relaxation; more than you would ever expect.

7 DAY KENYA SAFARI

DAY 1: NAIROBI. Arrival at Jomo Kenyatta International Airport. Overnight at your hotel

DAY 2: AMBOSELI PARK. Drive to Amboseli National Park where Mt. Kilimanjaro provides a stupendous backdrop to your afternoon game drive. Overnight at a campsite/Lodge. F/B.

DAY 3: LAKE NAKURU NATIONAL PARK. After breakfast, view game enroute to a journey which takes you through the Great Rift Valley to beautiful Lake Nakuru. You will have lunch in Nairobi before proceeding to Lake Nakuru for game drive enroute to your campsite Overnight at a campsite/ Lodge. F/B.

DAY 4: LAKE NAKURU NATIONAL PARK. Spend the whole day in Lake Nakuru National park on a morning and afternoon game drives. Overnight at a campsite/Lodge. F/B.

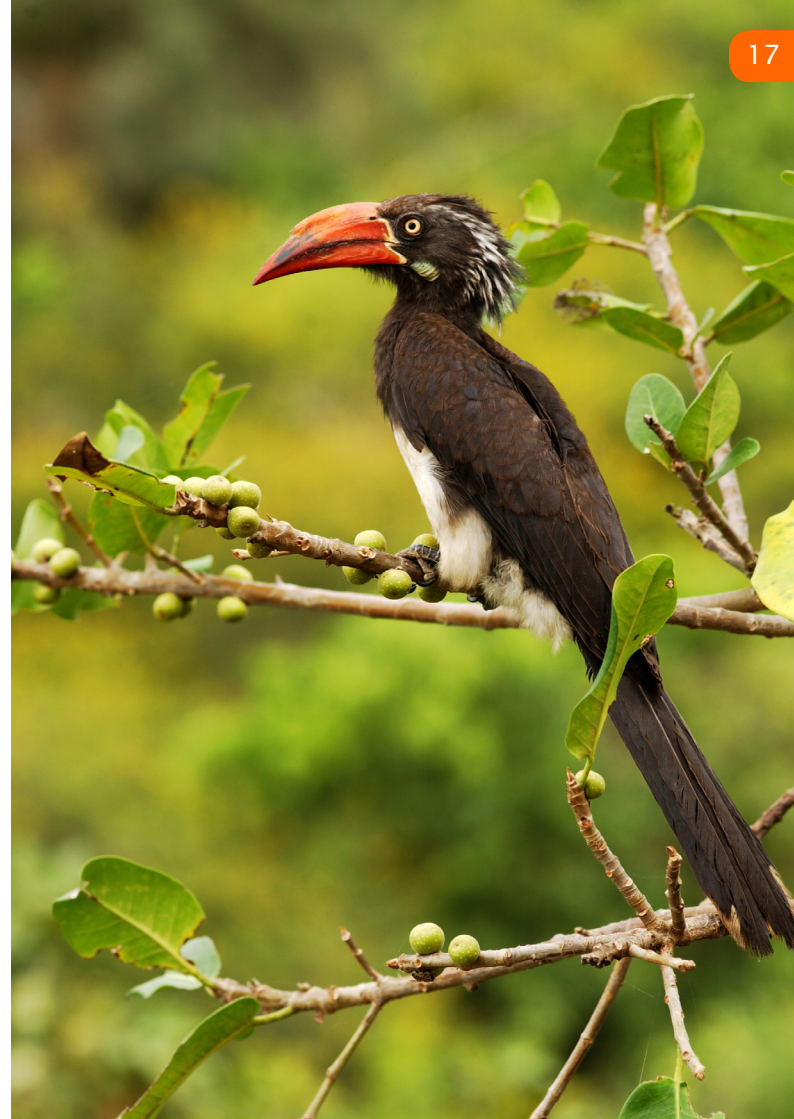
DAY 5: MAASAI MARA GAME RESERVE. Morning game drive before proceeding to Maasai Mara National Reserve. Overnight at a campsite/Lodge. F/B.

DAY 6: MAASAI MARA GAME RESERVE. Here on your game drives you get endless opportunities for close encounters with game. Overnight at your Campsite/ Lodge.F/B.

DAY 7: NAIROBI. Early morning games drive before breakfast and then prepare to depart for Nairobi arriving at around midday, lunch at the Carnivore restaurant. Relax before transferring to Jomo Kenyatta International Airport for you departure flight back home.



Please email us for the best quote based on your desired accommodation (high end, mid range or budget)
Email: info@crystalsafaris.com



Tanzania

With such a perfect Location perched on the edge of the African continent, and facing the Indian Ocean, Tanzania's weather and climate leaves nothing to be desired. Warm and sunny days are followed by cool and balmy nights, and whether you're on safari on the Serengeti plains or enjoying the tropical beaches of Zanzibar, the temperatures are always welcoming and gentle.

6 DAYS TANZANIA

DAY 1: ARUSHA. Arrival at Kilimanjaro Airport or Pick up at Namanga and the drive to Arusha for lunch. Afternoon drive to Lake Manyara National Park. Overnight at campsite/lodge. FB

DAY 2: ARUSHA – SERENGETI NATIONAL PARK. Early breakfast, then drive to Serengeti National park with picnic lunch and game viewing drives Enroute. Overnight at campsite/lodge. FB

DAY 3: SERENGETI NATIONAL PARK. Full day game viewing drives in Serengeti National Park. Overnight at campsite/lodge. FB

DAY 4: SERENGETI NATIONAL PARK-NGORONGORO. Early Morning game viewing drives

in the park, then breakfast, and go on with game viewing drives until lunch time, and after lunch drive to Ngorongoro via olduvai gorge. Overnight at campsite/lodge. FB

DAY 5: NGORONGORO GAME RESERVE. Early breakfast, then descend into the Ngorongoro crater floor with picnic lunch for full day game viewing. Overnight at campsite/lodge. FB

DAY 6: NGORONGORO GAME RESERVE - ARUSHA. Early break fast, drive to Arusha for lunch and then transfer to the airport for flight to Zanzibar or back home.





5 DAYS KILIMAJARO CLIMB – MARANGU ROUTE

Day 1: Early breakfast, then transfer to Marangu gate and start the climb by walking through the rain forest for about 3hrs and reach MANDARA HUT (3000m) Overnight.

Day 2: After breakfast, continue ascending through Alpine (heath and moorland vegetation for about 4hrs and reach HOROMBO HUT (3962m) Overnight.

Day 3: After breakfast, continue ascending semi desert type of vegetation for about 4hrs reach KIBO HUT (4500m) Overnight.

Day 4: Early morning start the final climb for about 3hrs to the summit UHURU PEAK (5895m). Then descend back to HOROMBO HUT. Overnight.

Day 5: After breakfast, descend back to Marangu gate and our vehicle will be waiting there to provide the transfer back to Arusha for overnight.



GETTING TO UGANDA, RWANDA, KENYA AND TANZANIA

Several International carriers are available including Kenya Airways, British Airways KLM, Ethiopian Airlines, SN Brussels, Emirates, KLM, South African Airways. Please contact your travel agent for reservations. Each country can also be reached by overland from either neighbouring countries.

PASSPORT AND VISAS

A valid Passport is mandatory and visa requirements sometimes change so check before travel. Otherwise visa can be purchased on arrival at all International Airports or land border. Currently the visa fees for Uganda costs \$50 for single entry and \$100 for multiple entries. Rwandan visa costs \$60 and please note that you need to apply for Rwanda visa via the internet at www.migration.gov.rw. Visas fees for Kenya and Tanzania cost \$100.

HEALTH/MEDICAL

A certificate of yellow fever vaccination is required. Visitors should take malaria precautions. It is advisable to drink bottled water, available throughout the country, rather than tap water. Seek medical advice before traveling. Bring any personal medication required. Anti Malaria tab lets and mosquito repellent are essential.

INSURANCE

All clients are advised to have adequate personal insurance before departure for the duration of their tour.

MEET AND GREET SERVICE

Upon arrival in Entebbe Crystal Safaris Representative will meet you after immigration control. If you have any problems call us on +256 (0)414 345742 or +256 (0)772 470 260 or +256 (0) 759 470260.

MONEY

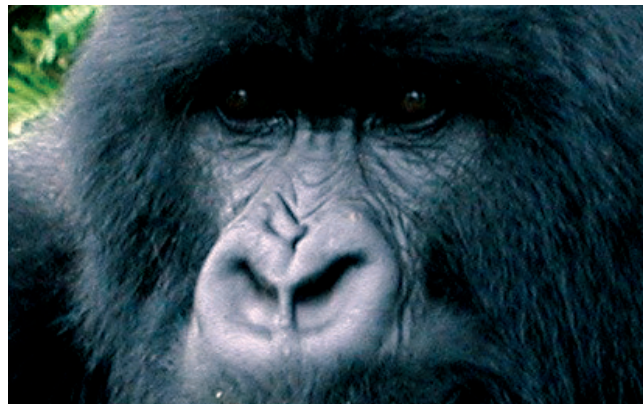
The unit of currency is the Uganda shillings. All major currencies are accepted although the US dollar is the most common. Cash or travelers cheques can be changed for local currency at banks and forex bureaux in all large towns ATM machines are available in Kampala, only cash is accepted in most places.

LANGUAGE

Educated Ugandans are generally fluent in English, the official language. There are also other 30 or more different local languages.

WHEN TO VISIT

Any time, though mountain hikes, gorilla tracking and forest walks are more challenging during the rains, which generally peak over mid-September to November and March to May.



CLOTHING

Day time temperatures are generally warm to hot, so bring lots of light clothing. Evenings are cooler, especially at high altitudes, so carry a couple of light sweaters too. Those who hike in the mountains will be exposed to alpine temperatures and should pack accordingly. Solid walking shoes and sturdy clothing are ideal for forest walks. Don't forget to bring a hat, sunglasses and waterproof jacket.

CAR HIRE AND DRIVING

Driving is on the left side. Several car rental companies operate out of Kampala. Visitors without experience of African roads are advised to organize a vehicle with a driver rather than self-drive.

ACCOMMODATION AND FOOD

International quality hotels exist in most large towns and national parks. Comfortable midrange and budget accommodation is found in all main tourist centers. Hotels and restaurants serve good western food though in the capital a wider range of cuisine is available. Local restaurants serve Uganda dishes.

TIPPING

Tipping is not mandatory, but a small gratuity is always appreciated.

WEATHER

Uganda is at the Equator as a result the climate does not change much, this makes Uganda and the rest of the east African countries all year round destinations. The rainy seasons tend to be from March to April and October to November, but this varies in different areas and it can rain any time of the year especially.

TIME

Uganda is three hours ahead of GMT.

SECURITY

For latest information consult the relevant Government consular advice or get in touch with us. Basic precautions should be taken, as in all countries and common sense used. Do not carry excessive jewellery

and money or leave them lying around. Use safe deposit boxes where available; secure travel documents and valuables. Do not walk unescorted at night.

TELEPHONE/INTERNET

International telephone communication is very good from



Kampala and all other Capital Cities in Town in East Africa but more difficult in some upcountry areas. The Mobile Telephone network is good and rapidly expanding. Most European or American Mobile phones with roaming agreement work in Uganda and the rest of East Africa. Local SIM cards can also be purchased in any major outlets at the airport and the major cities and towns. Internet facilities are also available in Kampala, Nairobi, Kigali and Dar-salaam and in Major towns in East Africa although the quality and speed of connection varies.

MEET AND GREET SERVICE

Upon arrival in Entebbe Crystal Safaris Representative will meet you after immigration control. If you have any problems call us on +256 (0)414 345742 or +256 (0)772 470 260 or +256 (0) 712 470260.

PHOTOGRAPHY

Not allowed near military buildings or soldiers. Before photographing people it is important to ask politely. Bring sufficient films, for digital photography please carry with you extra batteries and a car charger as not all lodges/camps have electricity.

EQUIPMENT FOR GORILLA TREKKING

Warm clothes, Fleece or light wool sweater, Moisture wicking undergarments, lightweight wool socks, long-sleeved shirt, strong waterproof walking boots (comfortable for going up and down steep hills), sturdy trousers, sunglasses, a torch, fast film binoculars, sun screen, a sun hat, a breathable lightweight rain poncho or parka with a rain hat, gloves to grip vegetation (inexpensive gardening

gloves work well) and a small backpack to carry water and a packed lunch. It is best to have layers of clothing as temperatures tend to change. The guides will make you a walking stick if needed.

ELECTRICITY

Uganda: 240 volts. 3-pin square sockets. Rwanda 230/240 volts at 50 Hz. 2-pin round socket. It is best to travel with your adaptor. In case of anything that is not clear please contact your guide.

For further information, please visit our website at www.crystalsafaris.com



EAST AFRICA



Crystal Safaris Ltd

For more Information please contact:

Plot 6 Colville Street, Airways House P.O. Box 9698 Kampala Uganda

Tel: +256 414 345742, +256 772 470260, +256 759 470260, Fax: +256 414 235798,

Email: info@crystalsafaris.com Website: www.crystalsafaris.com